

## Fire Adapted Fred: A Facilitation Guide

**Fire Adapted Communities understand their risk and are taking action to better prepare for, respond to, and recover from wildfire.**

The Fire Adapted Fred video is a 5-minute exploration of what it means to live in a community that is working hard to better live with wildfire.

**Concepts explored in the video include:**

- Individual, family and community preparedness
- Business resilience
- Safe and efficient wildland fire response
- Prescribed fire

In addition, the video highlights the fact that fire adaptation is a process that is on-going and that many people already live in a community that is adapting to wildfire.

**Fred has been working around his home. Can you identify the actions that Fred has taken around his home?**

*Responses may include: replacing the roof, removing vegetation from touching the home and replanting the area with lower growing plants and raking leaves.*

**Can you identify any other actions that Fred could take around his home?**

*Responses will vary. Discussion may include the large potted plants by the front door and the deciduous tree in the side yard. There is no "right" answer to this question. Instead, this question is meant to encourage discussion.*





Fred has taken the time to assemble a "go kit" with important papers, photographs, prescriptions, emergency supplies, and even some cash. Can you think of other items that should be included in a "go kit?"

*Responses may include: maps, at least three days of food and water, pet supplies, important phone numbers, an emergency battery operated radio and others.*

At the end of the video, a second family is shown assembling a "go kit." What items are included that are different from those Fred placed in his suitcase? How else do you think this family is preparing?

*Responses may include the small stuffed animal that the little girl places in her box and a discussion of other family preparedness activities such as evacuation practices and family meetings. This discussion point was intended to highlight the importance of preparing children, in an age-appropriate way, for wildfire.*

*Other resources include: <https://www.ready.gov/kids>*

Businesses can prepare before the fire too. What actions has Lupe taken to help her business thrive in an area prone to wildfire?

*Responses may include: development of a business continuity plan, redundant communication and sales systems, information backed up off-site, etc.*

What resources exist to help businesses prepare?

*Responses may include:*

*<https://disastersafety.org/ibhs-business-protection/ofb-ez-business-continuity/>*

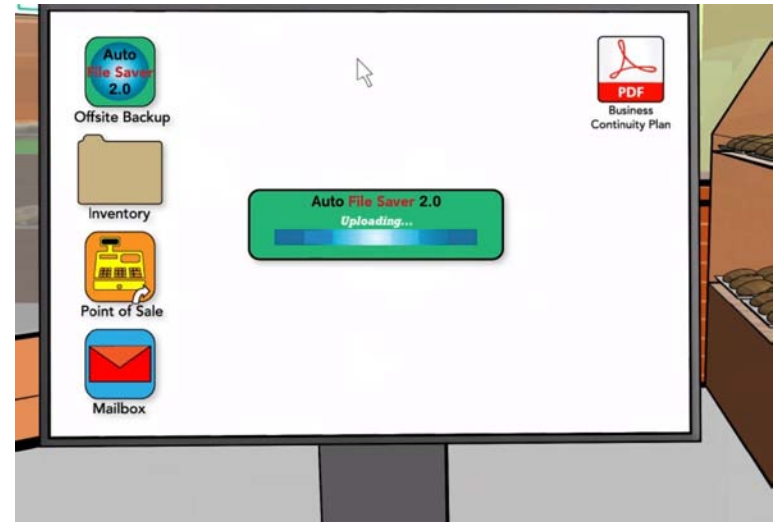
*<https://www.ready.gov/business>*

What partnerships would be important to facilitate a well-prepared business community?

*Responses may include: Local chamber of commerce, economic development districts, key business owners, hotel-motel associations, and more.*

Lupe, as a small business owner and Mexican-American, represents one of the fastest growing business sectors in Washington State. How are you engaging with partners and stakeholders from different cultural backgrounds?

*Responses will vary.*





Chief Cooper is discussing the importance of communities both being aware of their risk AND also taking action. Do you feel your community understands its wildfire risk? Why or why not?

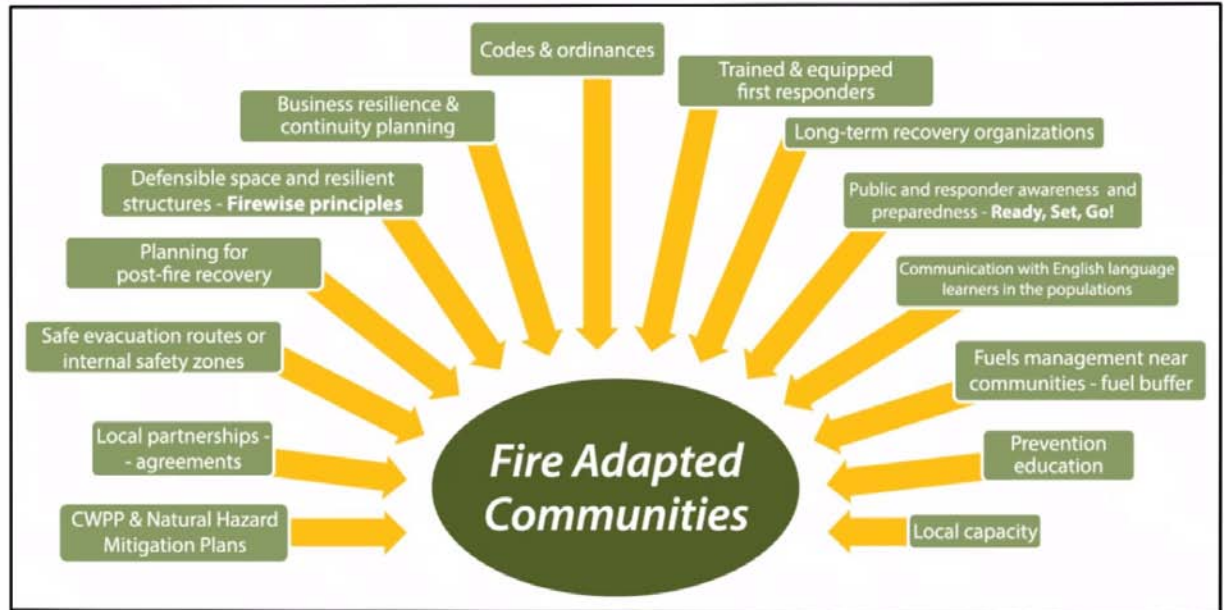
*Responses will vary.*

How would you help bridge the gap in your community between understanding risk and taking action to reduce it?

*Responses will vary but may include working to remove barriers to action (such as cost or know-how) through cost-share programs, workshops, youth programs and more.*

**Overall Notes/Additional Questions:**

- The goal of taking actions is to decrease the impact of wildfire on your community. The more actions taken by the community to live better with wildfire, the less impactful wildfire will be. At 4:00, the video talks about five things you can do to better live with wildfire. Can you think of five more?
- Community preparedness, response and recovery must necessarily include ALL portions of the community. How are you reaching out to non-native English speakers? Children? Seniors?
- The National Cohesive Strategy includes three main components: resilient landscapes, fire adapted communities, and safe and effective response. How do you see these components reflected in this video?
- The use of controlled burns or prescribed fire is also shown in this video. Is that a strategy that you are using in your community? Why or why not?
- The graphic above right shows some of the many ways to prepare your community for wildfire. Which of these are you using in your community?



**For more information, please visit [www.fireadaptedwashington.org](http://www.fireadaptedwashington.org)**